



"Solutions that feed a nation."

ECODRUM MODEL 660: 66' x 5'



Note: Two loading ladders, with two doors. The Second Door is your rebulking door!

Models 460, 560, & 660 include a Second Door/Ladders

Models 560 & 660 include a second temperature probe



Note: The Model 660 consists of six(6) eleven(11) foot sections.

The Model 660 runs on 1hp variable speed electric motor (220V)

Discharge end of a model 660 – The composted material will automatically discharge when the drum is spinning

CAPACITIES: Ecodrum Model 660

Approx. 830-1110 lbs daily

Approx. 6000 lbs weekly

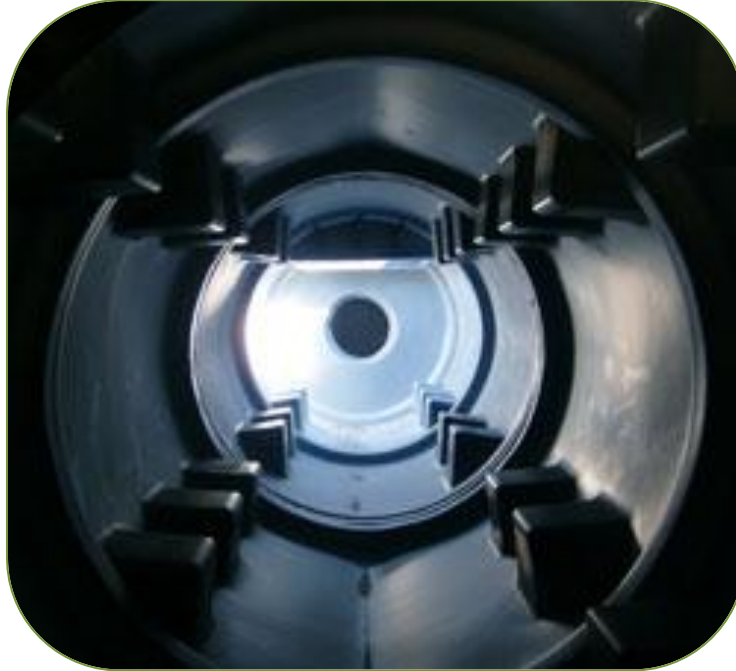
Total Capacity is 35.99 cu. Yds. (running at 75% full)



US Composting Council



INSIDE AN ECODRUM: Engineered to Your Needs



All Ecodrums come with standard baffles to assist in the movement of the product down the drum
Additional baffling/spirals are added depending upon your sites specific wants and needs



Inside of the Ecodrum – Showing temperature probes in the material
The temperature probes allow you to monitor your heat so that you can make sure you are getting the desired pathogen kill. You want your temperatures to read around 130 degrees.
Models 560 & 660 come standard with two temperature probes

ECODRUM AIR SYSTEM: Ensures Quick Aerobic Composting



(LEFT) Ecodrum Air System

6" Squirrel Cage Fan

1/3 hp Baldor Motor

The air system ensures aerobic compost by kicking on when the drum is spinning. This allows the air to get through the mixture. By making sure that air gets to your compost you will greatly speed up the composting process. If air does not get to your compost it will decay not compost, creating a long stinky process!

(RIGHT) View of the Air System inside the drum. Snorkle System. The air is pulled from the discharge end up through the product. This way you are not spreading pathogens as you're pulling from the clean back to the dirty.

The Ecodrum Air System can be added at any time!



LOADING THE ECODRUM: Hopper Delivery System/ Assist Panels



HOPPER DELIVERY SYSTEM: Allows you to Auger in your manure or food waste

The Hopper Delivery System makes loading much easier. Completely automate your system by augering directly out of your facility into the Ecodrum Hopper Delivery System. The hopper system is set up on a timer and will not overload the drum!



LOADING ASSIST PANELS: Makes loading everyday mortalities easier

The panels protect your drum from loader buckets and funnel your material right into the drum. Makes loading the drum quick and easy.



LOADING THE ECODRUM: Traditional Loading Methods



The most common way of loading the Ecodrum composter is with a front end loader
Your standard skid-steer/skid-loader is capable of reaching the loading door.

(ABOVE) Loading turkeys in the hatch door

Another popular method of loading the Ecodrum is with a pulley/bucket system



(ABOVE) Producers have welded plates on their loaders to make loading even easier. The standard loading door is 47" x 33". The loading door is properly sealed for composting and ensures no leakage!



"Solutions that feed a nation."



ECODRUM SITE SET-UP: Concrete Pad, Shelter



The Ecodrum will need to sit completely level. If it does not all your moisture will run one way or the other, creating an unworkable recipe.

It is strongly recommended that you pour a concrete pad, however pillars can work.

Most producers drop their pad off to a lower elevation, making a holding dock for their finished product (See pictures to the left). By pouring a holding dock it not only gives you somewhere to store your compost but gives you support walls to push against with your loader when moving the product.

Diagrams of all Models are available upon request.

Recommended concrete dimensions are also available in drawing form upon request.



It is recommended that you shelter your Ecodrum, due to simple wear on the drum. The drum is insulated with a R5 value, and can maintain its temperatures during the winter. Places experiencing the coldest of weather should shelter their drum.



"Solutions that feed a nation."

ECODRUM ROLLERS AND FRAMEWORK: Designed to Last



The Ecodrum sits on a series of 6" vulcanized rollers

The rollers are what spins the drum, the motor on the drum is geared down and the drum will make one complete turn in 18 minutes. The framework is constructed of a steel frame which is sandblasted for a long life and nice appearance.

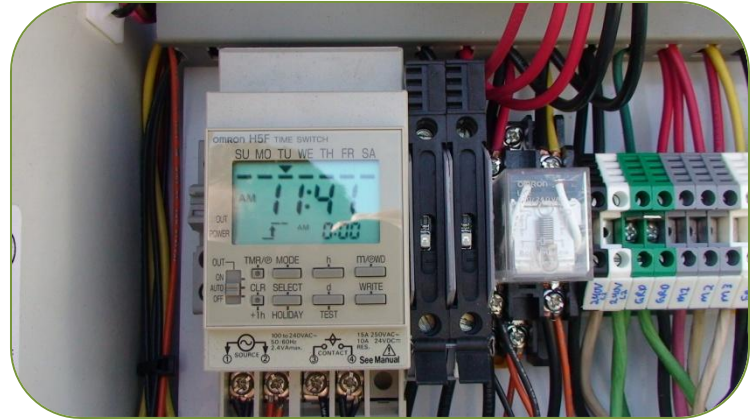


The Ecodrum has a series of guide wheels running the length of the drum (ABOVE LEFT)

These guide wheels keep the drum in drum in line and require no regular maintenance.

There are bearings which connect the rollers. These should be checked every 6 months and greased if necessary (ABOVE RIGHT)

"Solutions that feed a nation." ECODRUM CONTROL BOX: Automated and Easy



- The Ecodrum has a 24 Hour Timer and Memory Chip to ensure uninterrupted operation of the drum
- You have the option of setting your desired operating time
- The control box allows you to run the drum on AUTO MANUAL, or OFF
- Variable Speed Dial
- The drum has a FWD and REV mode
- REV mode allows you to fix your recipe if you make a mistake
- Option for PLC controller with wireless temperature monitoring (right)



(ABOVE) Exiting end of the Ecodrum

Your material will exit as the drum is spinning. By operating with the Ecodrum control box and 24hour timer your compost will automatically dispense as it works its way down the drum.



"Solutions that feed a nation."

ECODRUM MODEL 460: 44' x 5'



Note: Two loading ladders, with two doors. The Second Door is your rebulking door!

Models 460, 560, & 660 include a Second Door/Ladders

Note: The Model 460 consists of four(4) eleven(11) foot sections.

The Model 460 runs on 1hp variable speed electric motor (220V)



US Composting Council

CAPACITIES: Ecodrum Model 460

Approx. 555-740 lbs daily

Approx. 4000 lbs weekly

Total Capacity is 23.99 cu. Yds. (running at 75% full)



(ABOVE: Inside of an Ecodrum, Baffles to move product)



"Solutions that feed a nation."

ECODRUM MODEL 360: 33' x 5'



Note: The Model 360 consists of three(3) eleven(11) foot sections.
The Model 360 runs on 3/4hp variable speed electric motor (220V)



Inside of the Ecodrum Loading Door: Baffles and aggressive rifling to move product

CAPACITIES: Ecodrum Model 360

Approx. 425-740 lbs daily

Approx. 3000 lbs weekly

Total Capacity is 17.99 cu. Yds. (*running at 75% full*)



US Composting
Council



"Solutions that feed a nation."

ECODRUM MODEL 260: 22' x 5'



Note: The Model 260 consists of two(2) eleven(11) foot sections.
The Model 260 runs on 3/4hp variable speed electric motor (220V)



US Composting Council



(ABOVE: Using a shredder and conveyer to load the Ecodrum)

CAPACITIES: Ecodrum Model 260

Approx. 275-370 lbs daily

Approx. 2000 lbs weekly

Total Capacity is 11.99 cu. Yds. (running at 75% full)

